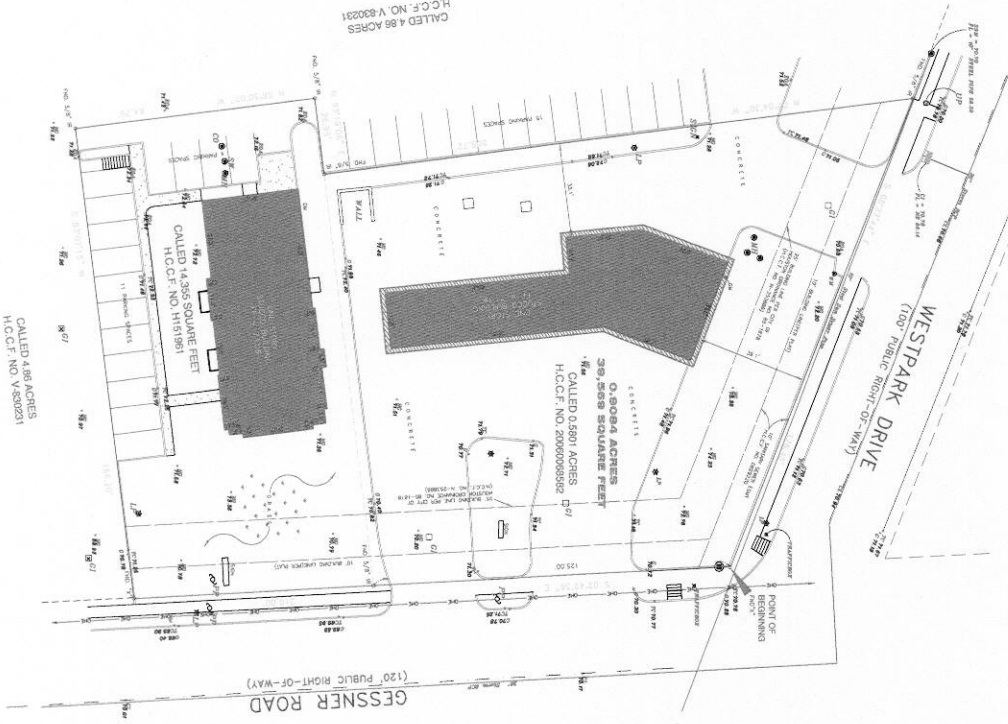


SADLER LLC
 5143 BIRDWOOD ROAD
 HOUSTON, TX 77096
 713-298-5557



NOT TO SCALE
 THIS PLAN IS THE PROPERTY OF TETRA CONSULTING ENGINEERS AND ARCHITECTS, INC. AND IS NOT TO BE REPRODUCED OR TRANSMITTED IN ANY FORM OR BY ANY MEANS, ELECTRONIC OR MECHANICAL, INCLUDING PHOTOCOPYING, RECORDING, OR BY ANY INFORMATION STORAGE AND RETRIEVAL SYSTEM, WITHOUT THE WRITTEN PERMISSION OF TETRA CONSULTING ENGINEERS AND ARCHITECTS, INC. ANY REPRODUCTION OR TRANSMISSION OF THIS PLAN WITHOUT THE WRITTEN PERMISSION OF TETRA CONSULTING ENGINEERS AND ARCHITECTS, INC. IS PROHIBITED AND WILL BE SUBJECT TO LEGAL ACTION.

APPROVED FOR SUBMITTAL TO THE CITY OF HOUSTON
 ENGINEER: TETRA CONSULTING ENGINEERS AND ARCHITECTS, INC.
 ARCHITECT: TETRA CONSULTING ENGINEERS AND ARCHITECTS, INC.

TETRA CONSULTING ENGINEERS AND ARCHITECTS, INC. 12345 GESSNER ROAD, SUITE 100, HOUSTON, TX 77060 TEL: 713-298-5557 FAX: 713-298-5558 WWW.TETRA-ENGINEERS.COM			
PROJECT:	5143 BIRDWOOD ROAD	DATE:	10/20/2023
SCALE:	AS SHOWN	BY:	R.T. WINTERS
CITY:	HOUSTON, TX	STATE:	TEXAS
COUNTY:	HARRIS	SECTION:	5
PROJECT:	5143 BIRDWOOD ROAD	DATE:	10/20/2023
SCALE:	AS SHOWN	BY:	R.T. WINTERS
CITY:	HOUSTON, TX	STATE:	TEXAS
COUNTY:	HARRIS	SECTION:	5